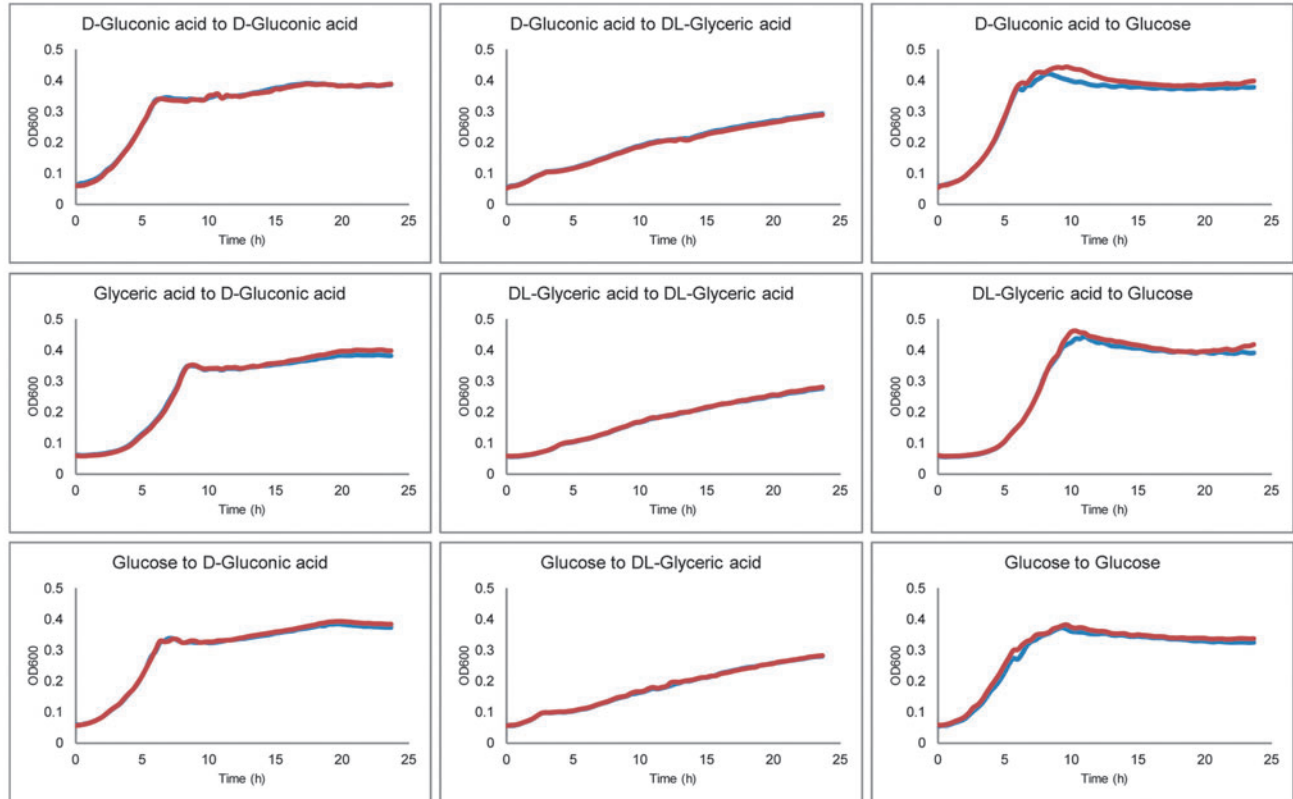


A

pH before and after growth

pH after growth	Nutrient Broth	DL-Glyceric acid	D-Threitol	L-Threitol	Erythritol	DL-Tartaric acid	meso-Tartaric acid	D-Threonic acid	D-Arabinonic acid	D-Lyxonic acid	D-Gluconic acid	Glucose	Positive cultures
<i>Pseudomonas aeruginosa</i>	8.37	6.78				6.71	6.79				6.97	6.86	4
<i>Burkholderia cepacia</i>	8.44	6.66									6.97	6.87	6
<i>Serratia marcescens</i>	8.40	6.59	6.63		6.62		6.82		6.84		6.97	6.87	8
<i>Klebsiella pneumoniae</i>	8.48	6.64				6.34					6.98	6.85	4
		3C			4C				5C		6C		
Start pH	6.4	6.34	6.92		6.9	6.29	6.37		6.9		6.89	6.92	

B

SUPPLEMENTARY FIG. S2. Bacteria cultured in minimal medium adapt to other carbon sources. **(A)** pH values in the medium before and after *Pseudomonas aeruginosa*, *Burkholderia cepacia*, *Klebsiella pneumoniae*, and *Serratia marcescens* growth in minimal medium supplemented with sugars described in Fig. 1A. **(B)** Growth curves for *K. pneumoniae* in minimal medium supplemented with DL-glyceric acid, D-gluconic acid, or glucose and shifted to another of these carbonaceous sources; red and blue traces are duplicates, two wells beside each other with the same strain and growth conditions.